

Land Management Planning

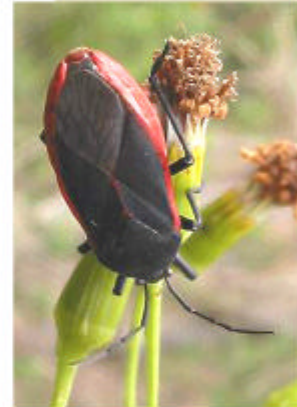
Iracambi is located in a region that includes a large remnant of the Atlantic Rainforest. There are five protected areas - three municipal conservation areas, a state park and Iracambi's own private reserve. We need a systematic plan for the conservation of these areas and surrounding forest fragments. Researchers and volunteers at Iracambi are working with local farmers to obtain the data required to develop and then implement this plan to protect this critical resource. Research includes:



Surveying existing forest fragments to determine biodiversity, size of populations, and incidence of biological indicators



Using GIS to map current land use; identifying remaining forest fragments and land and water degradation hot-spots



Identifying best practices for conserving soil fertility and water resources; evaluating alternative land uses that enhance potential for rehabilitation



Assisting local government in developing a land use plan that includes policies and practices that will improve the livelihoods of smallholders

Iracambi

Where farm and forest

meet

www.Iracambi.com

